

QTII Series Flash

Godox



QT *Series*

STUDIO FLASH

Amazing Fast Speed and Multi-Freeze Flash

QTII series high-speed flash has a comprehensive upgrade from the first generation with sophisticated design, advanced technique and abundant functions. With built-in Godox 2.4G wireless X system to offer convenient wireless control and high-speed flash to capture the wonderful moment, QTII series is excellent for wedding, advertisement, portrait, fashion, and high-speed photography.

QT1200IIM / QT600IIM / QT400IIM

Built-in Godox 2.4G Wireless X System
Offers Creative Shooting



- Fully support 1/8000s High-Speed Sync, Multi Flash, Delay Flash, Mask Function, S1/S2 Optic Triggering, C.Fn Custom Function, etc.



- QTII series has built-in Godox 2.4G wireless X system to wireless control multiple Godox flashes (built-in Godox X system) with 16 groups and 32 channels.

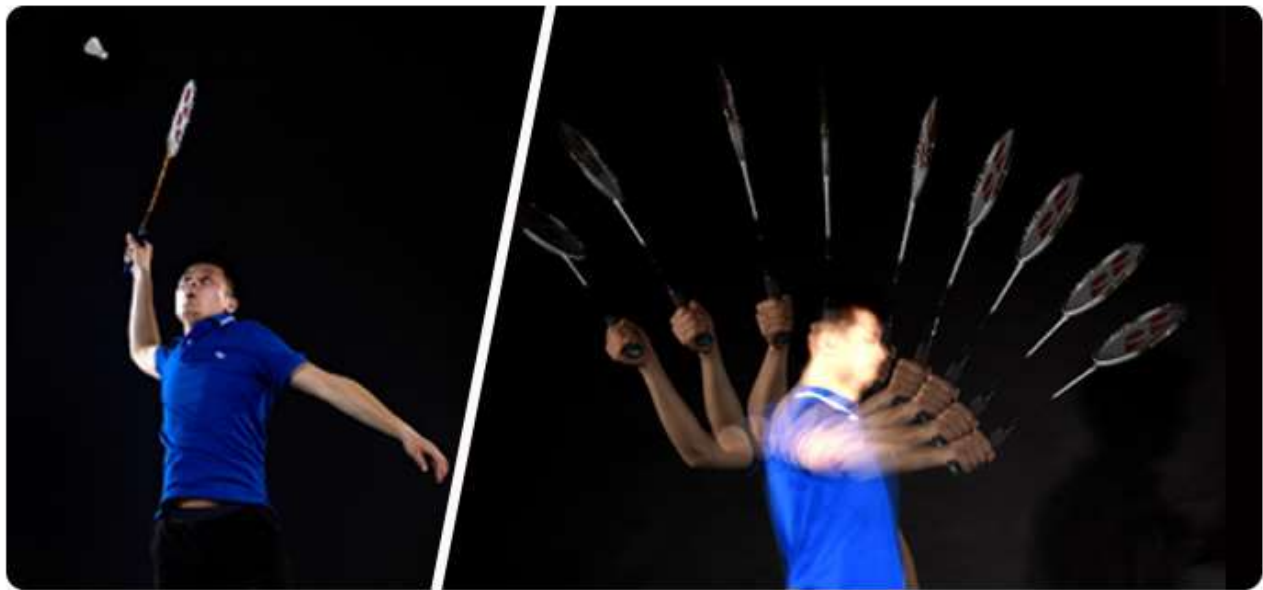


Several Flash Modes and Precise Color Temperature

- Stable Color Temperature Mode: color temperature is constantly at $5600K \pm 200K$ and ranges within $\pm 200K$, which is a good choice for the photographers who pursues stable color temperature.
- High-Speed Flash (speed) Mode: color temperature changes from 5400K-9000K, which is perfect for capturing the fast-changing actions.
- High-Speed Sync Flash Mode: color temperature changes from 4600K-5000K, which is suitable for clearly freezing each fleetingly perfect instant into eternal beauty.

Fast Speed and Multi-Freeze Performance

- As a high-speed studio flash, QTII has 0.05-0.9s extremely fast recycling time, 1/316-1/28984s (QT600IIM/QT400IIM) or 1/256-1/25640s (QT1200IIM) ultra short flash duration ($t0.1$) and over 10 continuous flashes per second, snapping all fascinating moments.



Accurate Power Output and Convenient Operation

- Output from full power 1/1 to 1/128.
- Equipped with 150W modeling lamp and clear LCD panel.



Light Brightness of Modeling Lamp: 5%-100%

Technical Data

Model		QT1200IIM	QT600IIM	QT400IIM
Flash Mode		M/Multi/Hss(high-speed sync)		
Guide Number in 1/1 full power (m ISO 100,using standard reflector)		102	76	65
Flash Duration (t0.1)	High-Speed Flash (speed) Mode	1/256s-1/25640s (220V)	1/316s-1/28984s (220V)	1/416s-1/35086s (220V)
		1/180s-1/14814s (110V)	1/190s-1/19606s (110V)	1/192s-1/22988s (110V)
	Stable Color Temperature Mode	1/256s-1/5554s (220V)	1/316s-1/4246s (220V)	1/416s-1/4983s (220V)
		1/180s-1/3852s (110V)	1/190s-1/3766s (110V)	1/192s-1/3702s (110V)
Color Temperature	Stable Color Temperature Mode	5600K±200K		
	High-Speed Flash (speed) Mode	5400K~9000K		
	High-Speed Sync Flash Mode	4600K~5000K		

POWER		1200WS	600WS	400WS
Recycle Time		Approx. 0.05-0.9s	Approx. 0.05-0.9s	Approx. 0.05-0.7s
Output Level	M	1/128~1/1		
	Hss	1/16~1/1		
	Multi	1/128~1/8		
Multi Flash		Yes (max.flash time:99, max.flash frequency:30)		
Sync Mode		High-speed sync (up to 1/8000s), first curtain sync, second curtain sync		
Delay Flash		0.01~30s		
MASK Function		√		
Fan		√		
Beeper		√		
Modeling lamp		150W		
Slave Trigger Model		S1/S2		
Display Flash Duration		√		
Display		High qualified LCD panel		
• Radio (2.4G) Transmission (X system)				
Wireless Function		Slave unit, ON/OFF		
Controllable Slave Units		16 groups:0~9, A, B, C, D, E, F		
Transmission Range (approx.)		50m		
Channel		32: 1~32		
Sync Triggering Mode		6.35mm sync cord jack, wireless control port, built-in 2.4G wireless transmission		
Dimension		Flash diameterΦ14CM,height of flash with handle 26CM,length of flash with lamp cover 50CM	Flash diameterΦ14CM,height of flash with handle 23CM,length of flash with lamp cover 41CM	
Net Weight		Approx. 4.26Kg	Approx. 2.96Kg	

More Info. Please visit www.godox.com